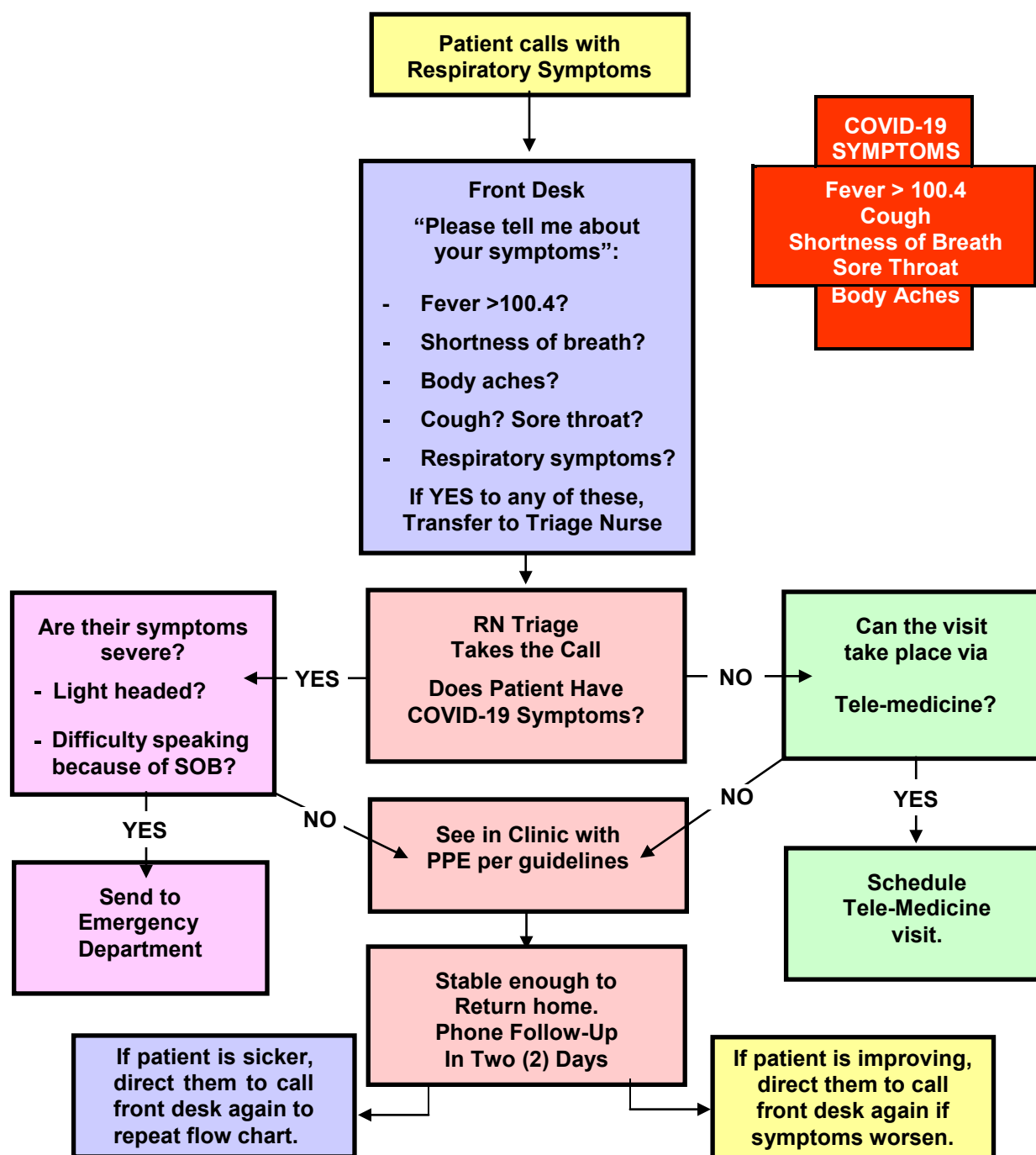


Outpatient Clinic Visit Guidelines



- It is imperative that outpatient clinics continue to see patients during the COVID-19 pandemic.
- It is prudent to utilize Tele-medicine for visits that do not need face-to-face contact.
- Mild-moderately ill patients can be seen and evaluated in the clinic.
- Do not send patients with mild-mod respiratory symptoms to the Urgent Care. Please see them in your clinic.
- If a patient clearly needs admission, arrange a direct admission.
- If patient needs urgent attention, send to ED in appropriate way.

Formulated: 4/20